

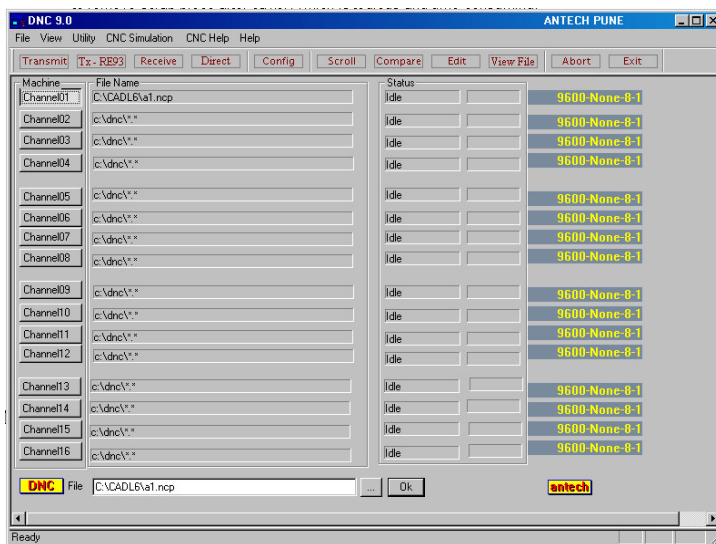
DNC-9

MORE INFORMATION

UPDATE

DEC 2004

DNC 9 is the newest software from Antech used for managing large no of part programs in high tech CNC shops. This NT/win 2000 compatible software provides simultaneous data communication upto 32 CNC machines. With this unique capability, several operators can work at the same time on separate part programs within the same shop all with immediate access to the desired data from CAD CAM lab. There are also many other intangible benefits associated with such an investment which can dramatically outweigh the productivity gains (i.e., re-work of nc programs , accessing the latest parameters, dignostic parameters, revisions, re-use of data by other applications, data corruption etc.) with access to a large PC harddisk memory .



FEATURES

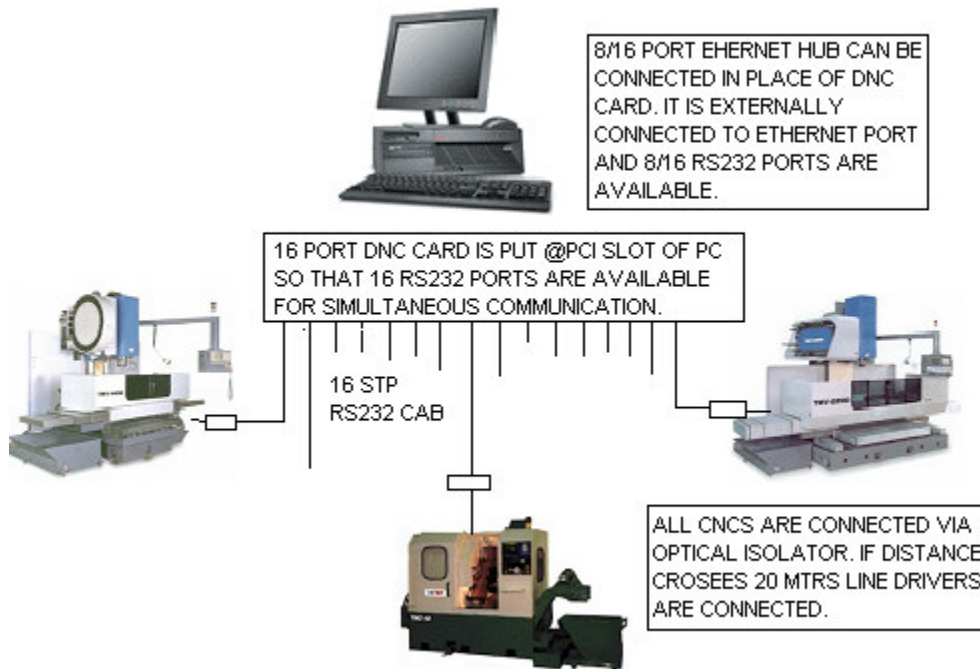
- **Compatible with win98/NT/2000**
- **Block by block transfer of data.**
- **Simultaneous communication.**
- **High speed.**
- **Master/slave struture.**
- **History Access.**
- **Database.**
- **Unmanned operation.**
- **BTR-RE93 compatible**
- **Power fail option.**

1. COMMUNICATION :

Very important module shown as above is capable of handling 16 CNC communication simultaneously. For this DNC 8/16 port controller card is required to fit inside PCI slot of PC so that 8/16 RS232/422 ports are available for communication.

- Bidirectional data transfer with 16/32 CNC with additionsl hardware.
- Higher baudrates upto 921600.
- Parameter selection so that new CNC can be attatched with ease.
- Facility of viewing,formatting, renumbering, printing, editing of part programs.
- Block by block trasfer of data ie drift mode.
- Directory, Part programs, Instructions can be called from CNC keyboard so that operator need not have to go to PC for data transfer. Called as Direct mode.
- Automatic storage of NC programs when sent from CNC. It won't update orignal master programs.
- Communication is in background mode. So PC is free for other use.
- In drift mode NC programs can be started from the same point in case of power failure.
- History maintenance. Complete log is maintained reg data transfer

2. DNC SETUP :



3. DNC ACCESSORIES.

- **8 PORT DNC CARD** : This is a 8 port PCI compatible card which can be fitted inside the PC. With this 8 more RS232 ports are available to PC for communication. This is microprocessor based card has built in dual ported RAM for fastest communication.
- **ETHERNET TO SERIAL HUB** : This unit is connected to Ethernet of std PC and provides 8/16 RS232 ports for communication.
- **LINE DRIVER** : This unit is used in RS232 communication for faster data communication over longer distance say up to 1 km. This converts RS232 signals to Rs422 at transmit end and then reconvert RS422 to RS232 at recipient's end.
- **OPTICAL ISOLATOR** : This unit isolates RS232 equipments from signal ground. With this unit connected in between PC and CNC machine signal ground does not get connected each other. Due to this chances of getting any noise over ground lines is eliminated and equipments are protected. This unit needs 230 volts supply.
- **RE93 :BTR equipment** : This unit provides PC CNC communication with tape reader port. Earliar old fashioned NC machines were having tape reader for communication. Now Tape reader is out dated. Tape reader is electronically emulated by Re93. This is compatible with various tape reader protocols like FANUC, Acraread, FER, AGIE etc

For Further Information contact

ANTECH MICRO SYSTEMS PVT LTD

P.O. Box No. 897, Deccan Gymkhana, Pune – 411 004.

Tele FAX : 020 – 24451361, 24453552

Email: antechmicro@vsnl.com, Visit us: www.antechmicro.com