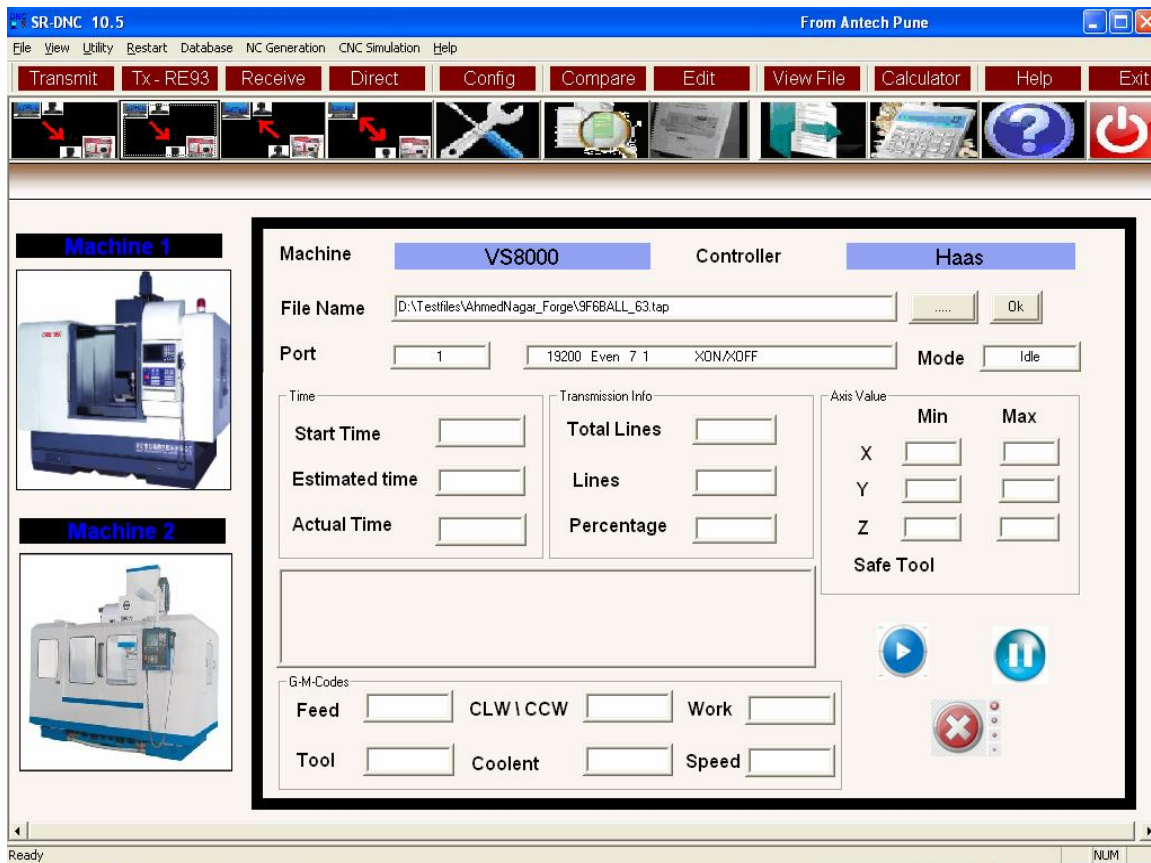


# SAR-DNC-10.5

Self Auto restart -DNC from Antech is used in CNC die mould industry. CNC while running large programs in DNC\Hard Disk and in case of power failure this newest DNC will defect location of last NC block executed and restart from the same point

SAR-DNC-10.5 is the newest software from Antech used for managing large no of part programs in high tech CNC shops. This NT/win 2000/XP/Vista-32bit compatible software provides simultaneous data communication up to 32 CNC machines. With this unique capability, several operators can work at the same time on separate part programs within the same shop. And with immediate access to the desired data from CAD CAM lab. There are also many other intangible benefits associated with such an investment which can dramatically outweigh the productivity gains (i.e., re-work of nc programs , accessing the latest parameters, diagnostics parameters, revisions, re-use of data by other applications, data corruption etc.) with access to a large PC hard disk memory .



## Salient features

Compatible with win98/NT/2000/Vista-32-bit

Block by block transfer of data.

Simultaneous communication.

High speed.

Master/slave structure.

History Access.

Database

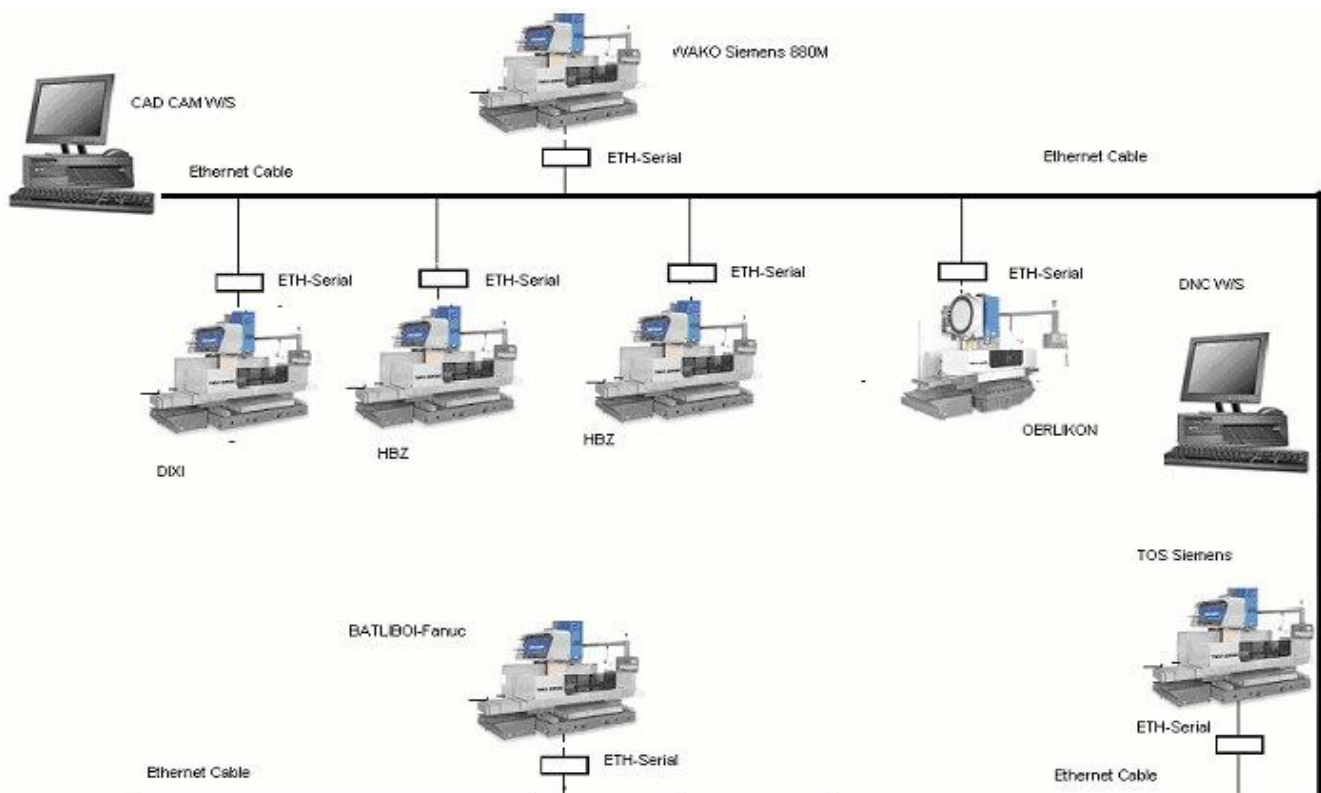
Unmanned operation.

BTR-RE93 compatible

Power fails option.

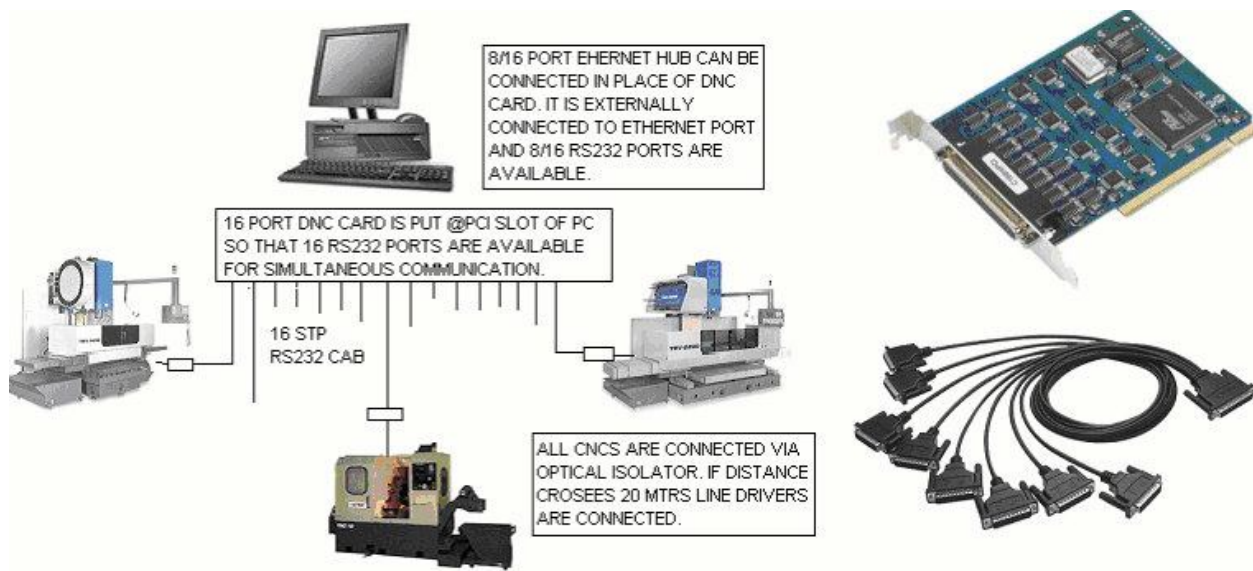
Auto storage of NC programs

## SAR-DNC for Production units



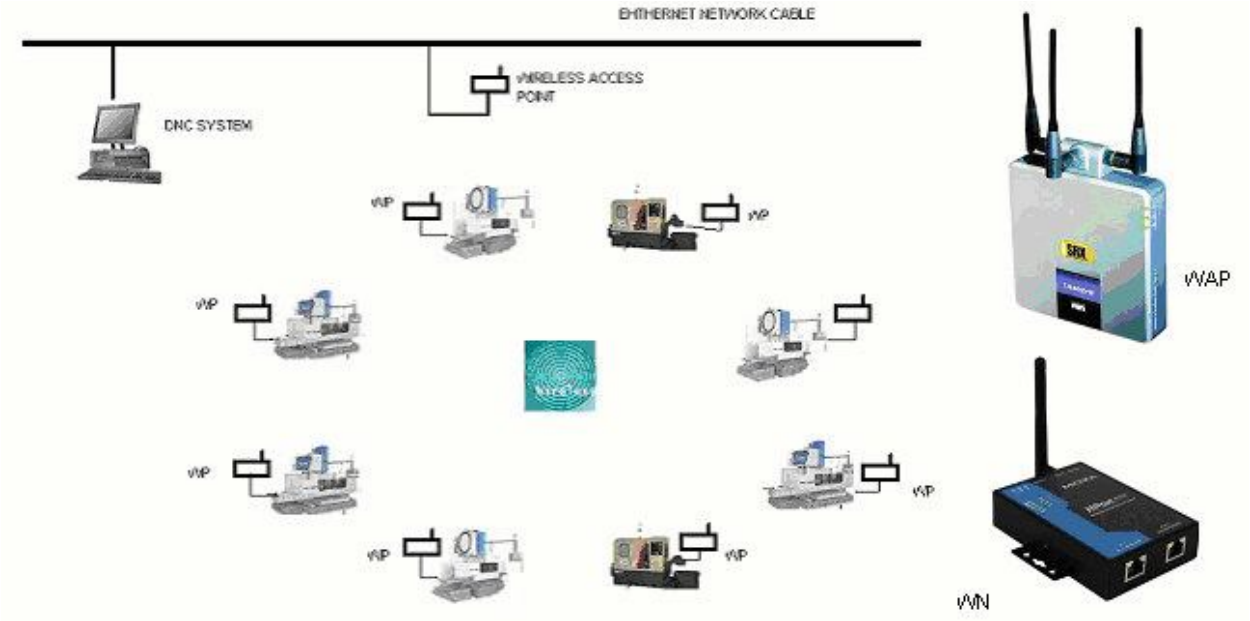
SAR-DNC can be used for managing part programs and diagnostic parameters. If user would like to use the existing LAN setup can go for this system. All Ethernet to Serial converters are used for each CNC. Not recommended for Tool room applications.

### 1.b SAR-DNC for production units :



SAR-DNC in this setup was very common in older days. PC after connecting with 8 port Serial card gets 8/16 ports for communication can be connected to each CNC with optical isolators. This system also can be used in Tool rooms.

# Wireless SAR-DNC for production units



This setup is useful and now becoming most popular among production units . There is wiring required and is totally flexible. It can be even integrated with Shop link machine monitoring software.